

June 2024

Management Presentation



CONFIDENTIAL

This confidential presentation (this “Presentation”) has been prepared by Jule Power exclusively for informational and discussion purposes only, and may not be relied on in any manner as legal, tax, regulatory, or investment advice and shall not constitute an offer to sell or a solicitation of an offer to buy securities. Any descriptions contained herein are believed to be reliable, but Jule Power does not warrant to their completeness or accuracy and such descriptions are not intended to be complete descriptions. Recipients of this Presentation agree that Jule Power, and its respective partners, members, employees, officers, directors, agents, and representatives shall have no liability for any misstatement or omission of fact or any opinion expressed herein.

This Presentation is not intended to be relied upon as the basis for an investment decision, and is not, and should not be assumed to be, complete. Prospective investors must make and rely on their own investigations and evaluations of the information contained herein. The information contained herein does not take into account the particular investment objectives or financial circumstances of any specific person or entity who may receive it. The information contained herein is not, and may not be relied on in any manner as legal, business, tax, U.S. Employee Retirement Income Security Act of 1974, as amended, and the rules and regulations promulgated thereunder (“ERISA”), accounting, or other advice, and each prospective investor should consult its own advisers as to legal, business, tax, ERISA, accounting, and other related matters concerning an investment with Jule Power.

Except where otherwise indicated herein, the information provided herein is based on matters as they exist as of the date of preparation and not as of any future date, and will not be updated or otherwise revised to reflect information that subsequently becomes available, or circumstances existing or changes occurring after the date of preparation.

Certain information contained in this Presentation constitutes “forward-looking statements,” which can be identified by the use of forward-looking terminology such as “may,” “will,” “should,” “expect,” “anticipate,” “target,” “project,” “estimate,” “intend,” “continue” or “believe,” or the negatives thereof or other variations thereon or comparable terminology. Furthermore, any projections or other estimates in this Presentation, including estimates of returns or performance, are “forward-looking statements” and are based upon certain assumptions that may change. Moreover, actual events are difficult to project and often depend upon factors that are beyond the control of Jule Power. Prospective investors should not rely on these forward-looking statements in deciding whether to invest in Jule Power. In addition, unless the context otherwise requires, the words “include,” “includes,” “including” and other words of similar import are meant to be illustrative rather than restrictive.

Certain information contained herein, e.g., concerning economic trends and performance, is based on or derived from information provided by independent third-party sources. Jule Power believes that the sources from which such information has been obtained are reliable. Jule Power cannot guarantee the accuracy of such information, however, and has not independently verified the assumptions on which such information is based. To the best of its knowledge, Jule Power is not aware that any such information is subject to confidentiality provisions restricting its use. Jule Power does not make any representation or warranty, express or implied, with respect to the fairness, correctness, accuracy, reasonableness or completeness of any of the information contained herein, and it expressly disclaims any responsibility or liability therefor. Jule Power reserves the right to modify any of the terms of the offering and the interests described herein and to revise and reissue this document. Jule Power has no responsibility to update any of the information provided in this document.

The recipients of this Presentation acknowledge and agree that it may contain material, non-public information, and that the United States securities laws prohibit any person who has material, non-public information about an issuer or securities from purchasing or selling securities of such issuer or from communicating such information to any other person.

Each recipient further agrees that it will (a) not copy, reproduce, or distribute this Presentation, in whole or in part, to any person or entity (including any employee of the recipient other than an employee directly involved in evaluating an investment in any Jule Power Vehicle) without the prior written consent of Jule Power; (b) keep permanently confidential all information contained herein that is not already public; and (c) use this Presentation solely for the purpose set forth in the first paragraph above. Except as otherwise provided in a written agreement between the recipient of this Presentation and Jule Power, if the recipient receives a request under any applicable public disclosure law to provide, copy or allow inspection of this Presentation or other information regarding or otherwise relating to Jule Power, the recipient agrees to (i) provide prompt notice of the request to Jule Power, (ii) assert all applicable exemptions available under law and (iii) cooperate with Jule Power to seek to prevent disclosure or to obtain a protective order or other assurance that the information regarding or otherwise relating to Jule Power will be accorded confidential treatment.

Investment Highlights

- ✓ Fully De-Risked Delivery Model with Minimal Technology and Execution Risks
- ⚡ Technology and Business Model Deliberately Evolved to Address Pressing Customer and Market Needs
- 🎯 Commercial Adoption and Roll Out With High-Quality Customers
- 📈 Scalable Business in a Large and Rapidly Growing Total Addressable Market
- 📊 Strong Unit Economics
- 📄 Market Leading, Proprietary Platform Provides Competitive Advantage
- ★ Experienced Management Team



What We Do

Redefine power solutions through...



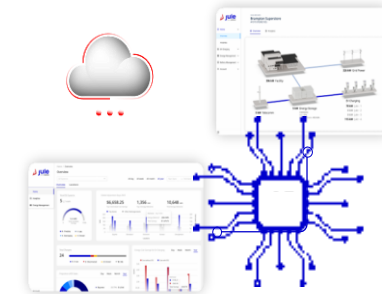
BATTERY STORAGE & ENERGY MANAGEMENT

- Battery storage solutions for commercial and industrial customers
- Fully-integrated and pre-fabricated solutions for rapid deployments and reduced complexity



CHARGING INFRASTRUCTURE

- Comprehensive charging solutions, built for businesses
- End-to-end charging infrastructure:
 - Design: Future-proof charging solutions
 - Hardware manufacturing and software
 - Installation and operational services



AN INTEGRATED PLATFORM

- Proprietary Jule Platform for asset management and optimization
- Energy Management Solutions
 - Peak Shaving
 - Grid Response
 - Renewables Integration

Fully De-Risked Delivery Model



Technology



Execution



Operations



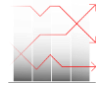
Market Adoption

Jule's DC-Microgrid Topology



Maximizing Efficiency:

Minimize steps of power conversion and reduce loss



Simplified Setup:

Factory-integrated DERS & EV Charging Hub with native MG control with one active gateway for grid interaction



Enhanced Safety:

Consistent system-wide DC circuit provides the same insulation ratings to mitigate electrical failure



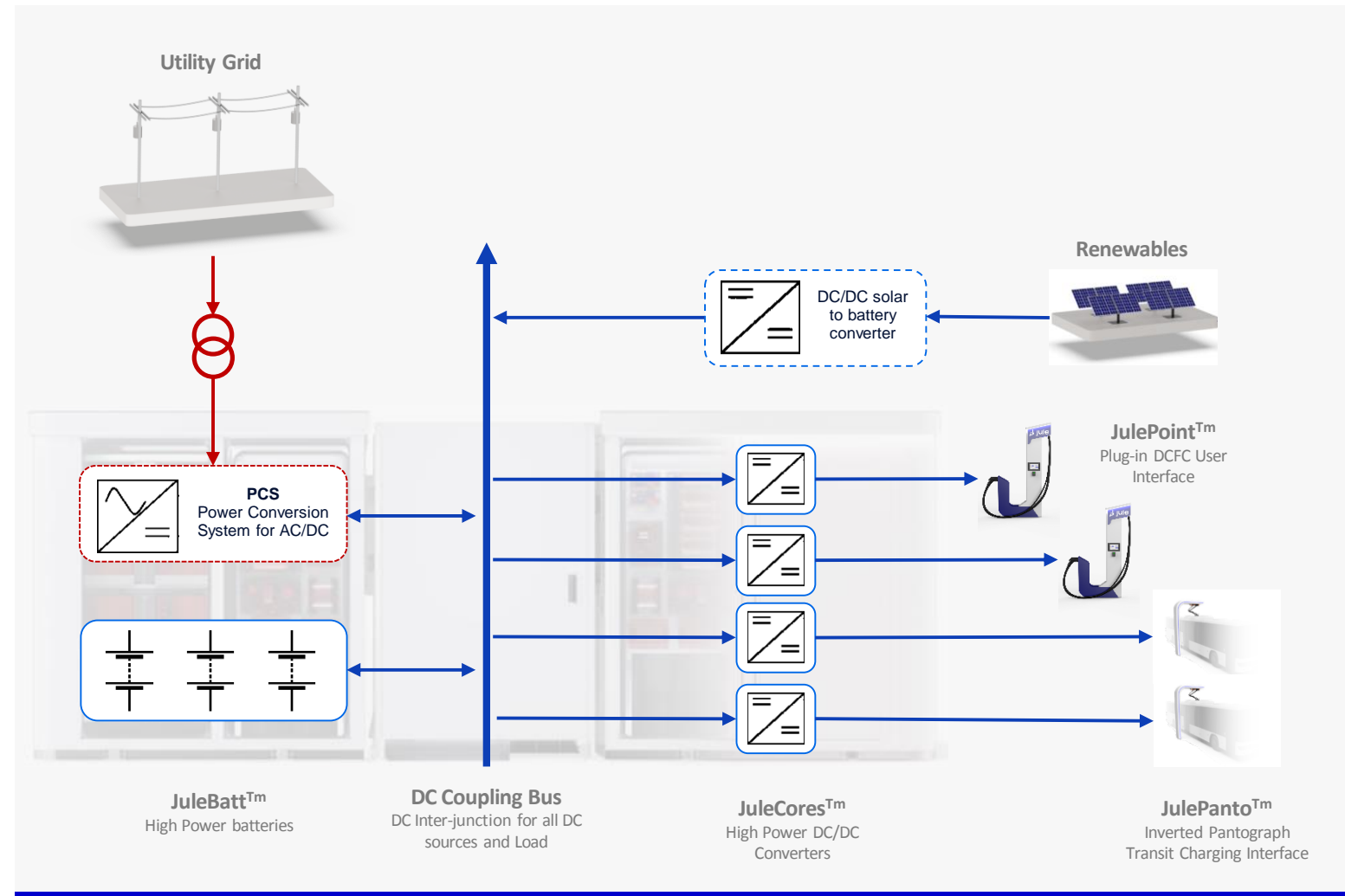
Enhanced System Control:

Act as one box of device on the grid to eliminate most utility integration challenges in AC-coupling design

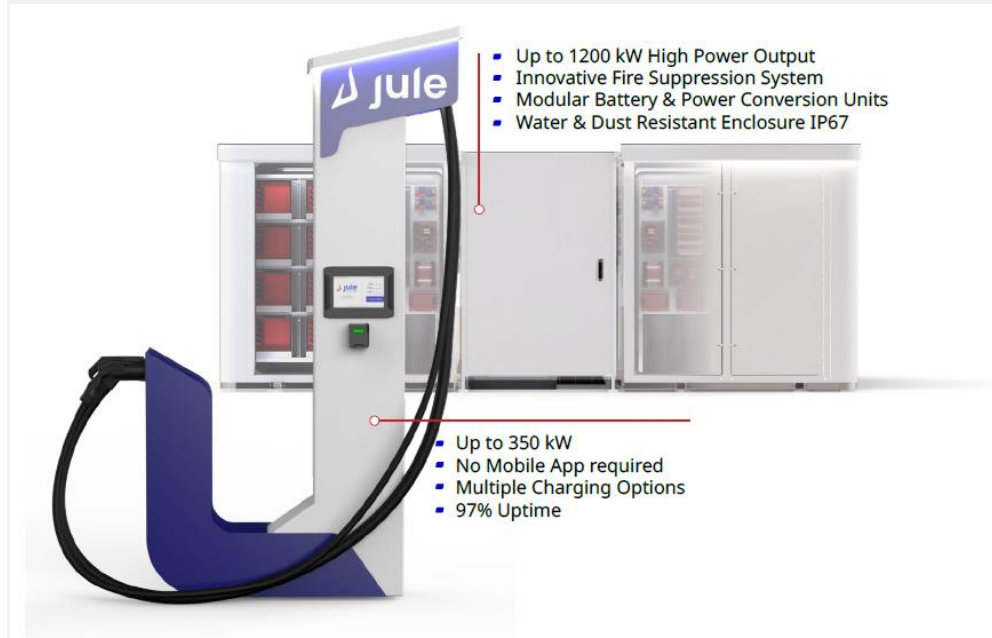


Empowering Off-Grid Applications:

Direct DC Connection of Solar Panels to Batteries and EVFC enables the system to go off-grid



Jule Hub

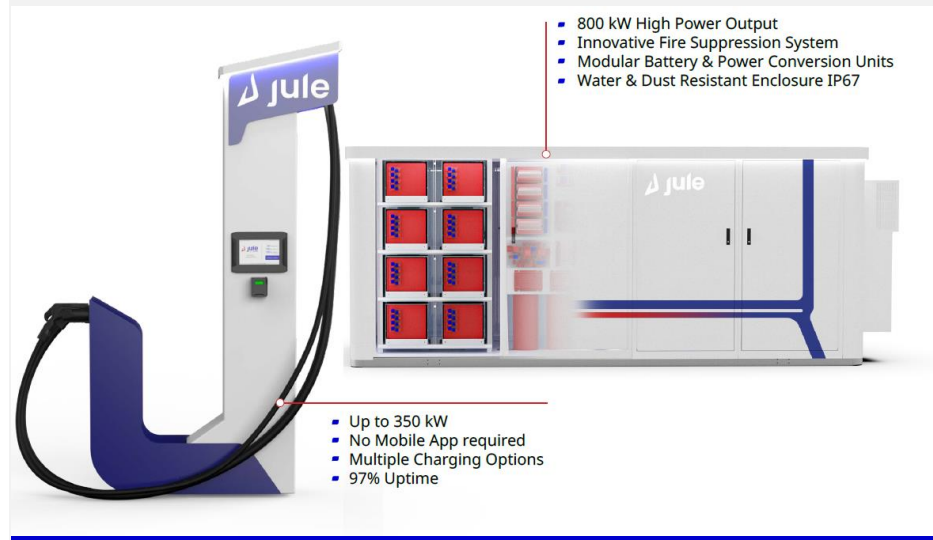


Jule Hub Specifications

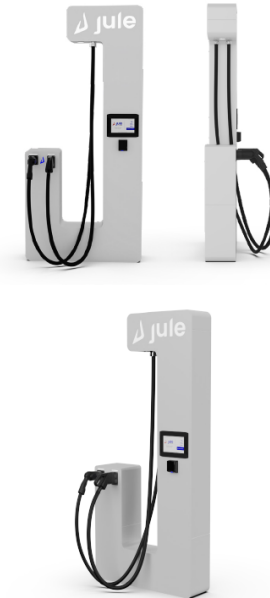
Component Configurations	220	440	660
Power Conversion Modules	4	8	8
Battery Modules	16 250 kW (nom) 300 kW (peak)	32 500 kW (nom) 600 kW (peak)	48 750 kW (nom) 900 kW (peak)
Electrical Specifications	220	440	660
Energy Storage (Rated)	220 kWh	440 kWh	660 kWh
Recommended Input Power (3 Phase)	50 - 100 kW	100 - 200 kW	150 - 300 kW
Other Input Options	1 Phase: 8-11 KW 3 Phase: 30-100 kW, 250 kW, 750 kW+		
Max Power Output	400 kW	800 kW	1200 kW
Energy Storage Voltage	650 - 790 V		
Mechanical Specifications	220	440	660
Dimensions ¹ W x L x H	8 x 12 x 7 ft 2.4 x 3.7 x 2.1 m	12 x 22 x 7 ft 3.7 x 6.7 x 2.1 m	12 x 22 x 7 ft 3.7 x 6.7 x 2.1 m
Weight ²	10 000 lbs 4 536 kg	20 000 lbs 9 072 kg	28 000 lbs 12 701 kg

Jule Hub XL

A Tailored solution for NEVI



Electrical Specifications		100 200 350
Power Output	Up to 100 kW, 200 kW or 350 kW ¹	
Rated Max DC Voltage	CCS 200V to 1000V NACS ² 200V to 1000V CHAdeMO ² 200V to 500V	
Rated Max Current	CCS 200A @ 1000V, 350A @ 500V NACS 200A @ 1000V CHAdeMO 500V	
Mechanical Specifications		100 200 350
Dimensions	W x L x H	11 x 44 x 90 in 28 x 112 x 229 cm
Weight	450 lbs 204 kg	
Network & Components		100 200 350
Network	OCPP 2.0 / 1.6J, JuleLink	
Connection	4G / LTE, Ethernet / Wi - Fi via Cradle Point	
Display	10" Outdoor Ruggedized Color Touch Screen + Push Button Control	
Payment	Credit + Debit + Android/Apple Pay	
Supported Plug Type	CCS Type 1 & CHAdeMO or NACS ³	
System Rating		100 200 350
Environmental	-30 °C to 50 °C (-22 to 122 °F), 95% humidity, 6000 ft/2000 m altitude, NEMA 3R	
Compliance	UL, ESA and TUV approved for USA and Canada. Complies with UL2202, IEC 61851, DIN SPEC 70121, ISO 15118, CHAdeMO, NEC Article 625, FCC Part 15 Class A.	
Jule Hub Configurations ⁴		100 200 350
440 kWh - 8 power modules		8 4 8



Jule Point 2.0: a more flexible design approach

Angled top to avoid snow buildup

Separate components for color accents

Retain high durability and avoid plastic wraps for colour integration

On-site POS
Skip the App !
Dont;

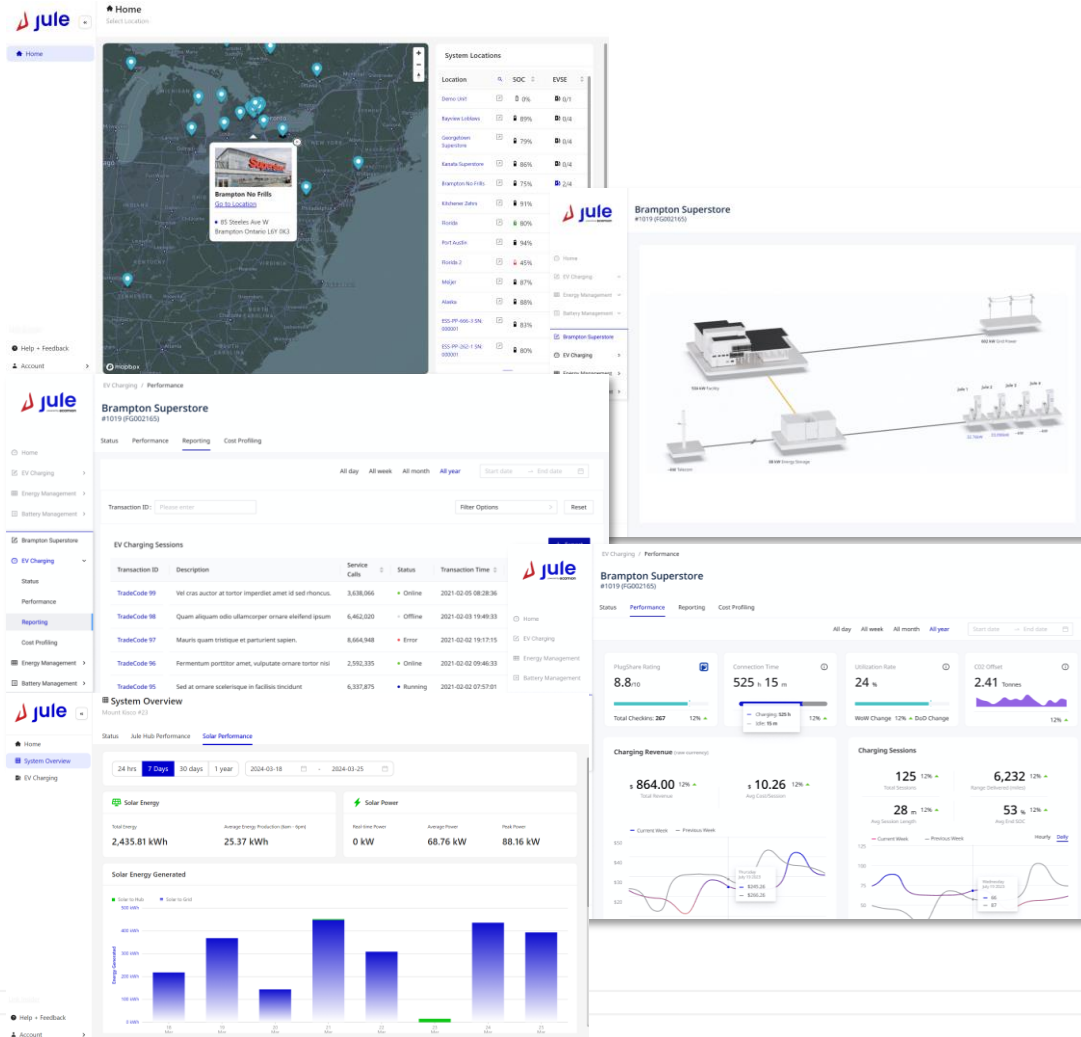
Cable exit point relocated to extend cable length
Extends cable length by an extra 20 in

Reduce enclosed surface for cost savings
Limit housing to the essentials

Accommodate Cable Entry Point

Jule Link

DERs and EVSE Network Management SaaS



Feature Readiness

- ✓ OCPP 1.6 & 2.0, OCPI, Open ADR
- ✓ Jule's full ownership of Source Code
- ✓ Managing all your energy resources on a single platform: EVSE, ESS and Renewables
- ✓ Keep track of your sales and revenue
- ✓ Enterprise Features: Fleet Management & Energy Intelligence Analytics

License Types

- ✓ Essential: Free functions allowing user to monitor a single site
- ✓ Professional: Bidirectional monitor and control across your network
- ✓ Premium: Enterprise Solution & Custom Features

PRIVILEGED & CONFIDENTIAL
NOT FOR FURTHER DISTRIBUTION

Problems We Solve



LARGE CAPITAL EXPENDITURES

Bringing high power to an existing site costs \$500K-\$1MM



HIGH OPERATING EXPENSES

Drawing high power puts stress on the grid, resulting in high demand charges



TIME INTENSIVE UTILITY UPGRADES

Bringing high power to an existing site can take 12-24 months



VARIABLE POWER DEMAND

A car charging at 50 kW has the same power draw as 41 homes¹

(1) EIA Electric Power Monthly Report— average home consumes ~10,000 kWh/ yr, resulting in a 1.2 kW power consumption.

Jule Innovation: Affordable & Reliable Power At The Edge Of The Grid

Tangible Results:



No Capital Cost

Save \$500K - 1MM in utility upgrades



Minimize Demand Charges

Power draw is regulated to never exceed initial peak power demand



Indoor and Underground Installation

Compact system with fire suppression



Peak Shaving

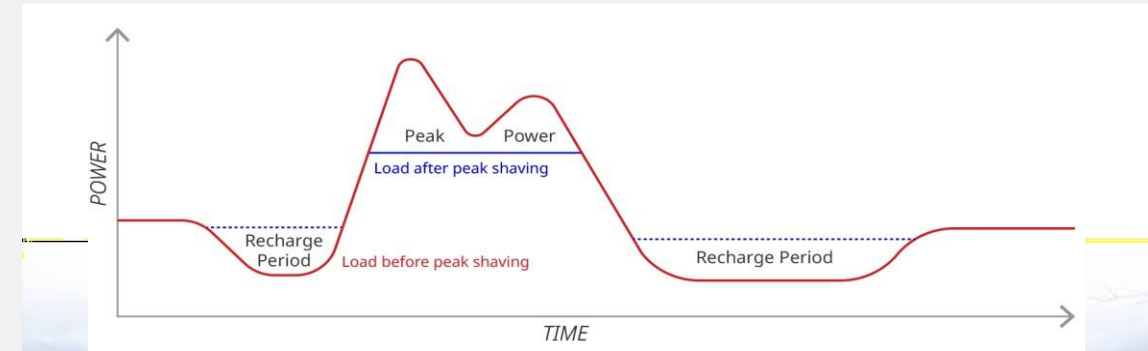
Power flows from BESS to store during peak hours to reduce costs by \$100K/year



Reliability

Jule's Network Operations maintain 97% uptime for EV charging; 100% for back-up power and peak shaving

Case Study: Landmark Infrastructure and Loblaws

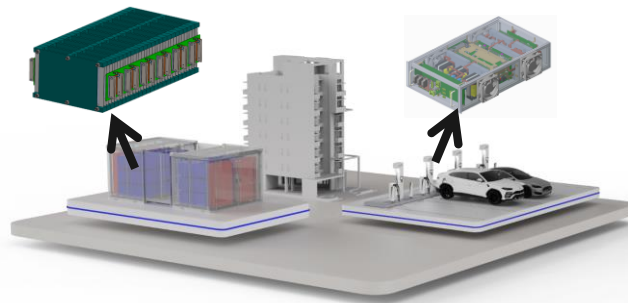


Jule Grid 3.0 – the InterGrid

With small footprint hardware, distributed autonomous energy hub and AI-based inter-grid energy management – the “ARC”

Adaptability

Space-optimized Power Electronics
Compact module, distributed installation



- Adaptability to diverse service environments
- High-power Density packaging to minimize footprint
- Maximal operating efficiency to minimize power + energy loss

Reliability

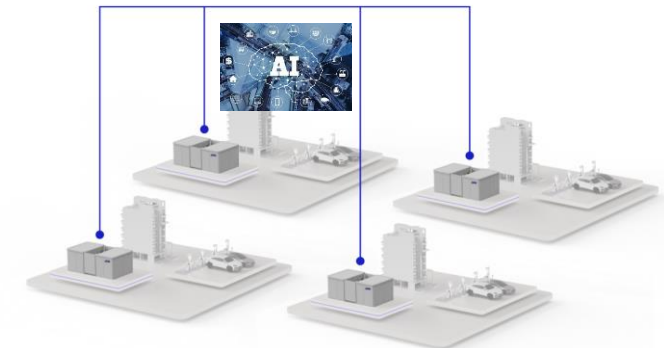
On-site (edge) AI-powered Autonomous & Self-healing Energy Hub



- High speed, resolution and transparency of data to enable full digital visibility
- On-site (edge) AI to enable self healing Hub to minimize manual maintenance
- AI-based decision-making function for Charging Asset Management

Connectivity

“The Intergrid” AI Network



- Participate as whole network to operate complex assets
- Allow AI to process complex electron evaluation, task allocation and clustering